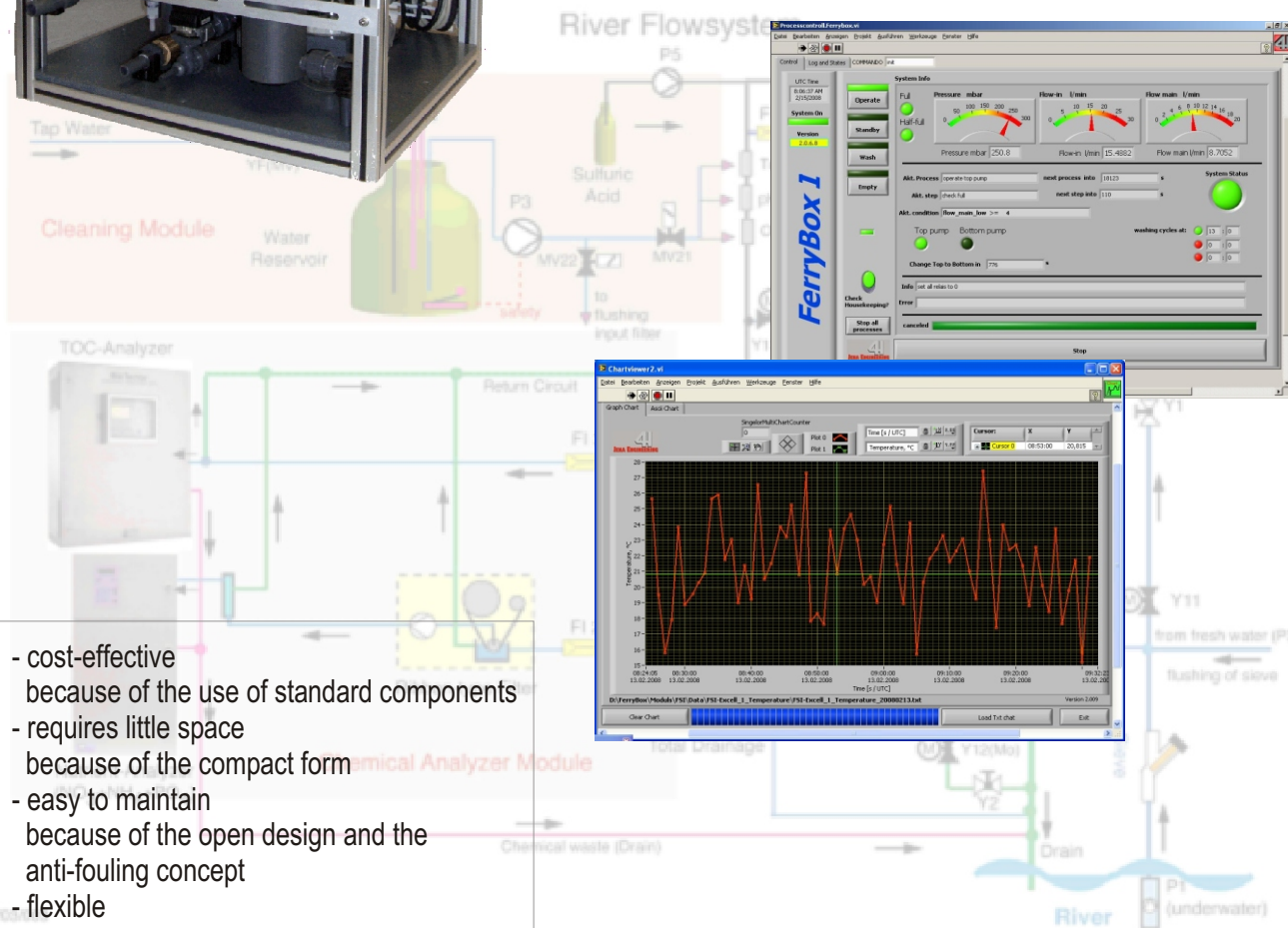




Application

The **-4H- FerryBox** provides solutions to the problems associated with long-term *in situ* monitoring of rivers, estuaries, coastal zones and open sea. The modular flow-through system combines high flexibility in the choice of sensor types and methods with a fully integrated anti-fouling concept and the possibility for automatic and remote-controlled operation based on the "LabView" software technology. Due to this technology, a wide range of monitoring-tasks, all from stationary river monitoring to position controlled FerryBoxes is possible.



- cost-effective because of the use of standard components
- requires little space because of the compact form
- easy to maintain because of the open design and the anti-fouling concept
- flexible because of the by-passes and the use of standard components
- pressure resistant this type of system can be used below the waterline
- remote control is possible

-4H- JENA engineering GmbH
 Mühlenstraße 126 • D-07745 Jena, Germany
 Tel. +49(0)3641/28 87-0 • Fax +49(0)3641/28 87 26
 e-mail: info@4h-jena.de • http://www.4h-jena.de